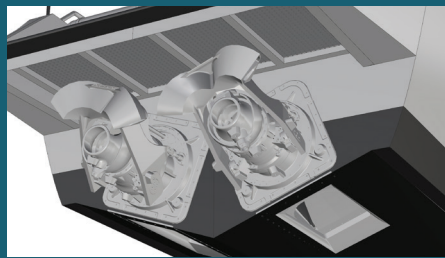
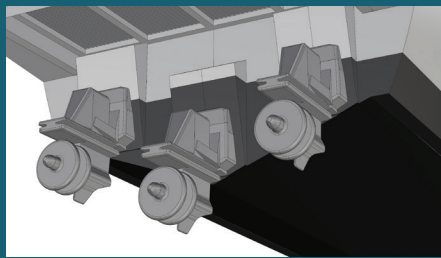


PROPULSION

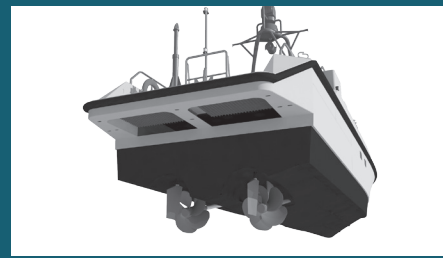
Thanks to its 3 different typologies of propulsions, Waterjet, Shaft Line & Stern drive, the MNI 15 is suitable for sea and riverine navigation:



Waterjet



Sterndrive



Shaftline

2 x Waterjet
2 x Seatek 800 Plus
2 x 780 Hp @ 3000 rpm
>40 kn
35 kn

2 x Waterjet Hamilton:
it provides the best speed performance and maneuverability combined with a very low draft, ideal for stranding and low river bottoms.

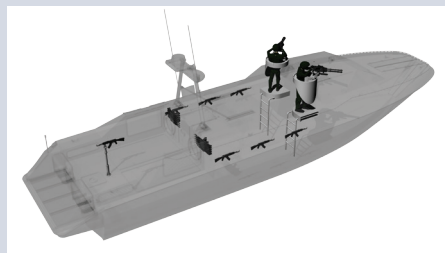
3 x Stern Drive
3 x Volvo D6-400
3 x 400 Hp @ 3500 rpm
>34 kn
32 kn

3 x Volvo Penta Aquamatic Duoprop: it offers performances slightly inferior to the waterjet, but confers to the propulsion system simplicity of management and maintenance advantages.

2 x Shaft Line
2 x MAN R6-800
2 x 800 Hp @ 2300 rpm
>32 kn
30 kn

2 x shaft lines: it offers performances comparable to the sterndrive, with a great simplification of the propulsion system, a reliability advantage of extremely low maintenance requirements and compactness of the propulsion system.

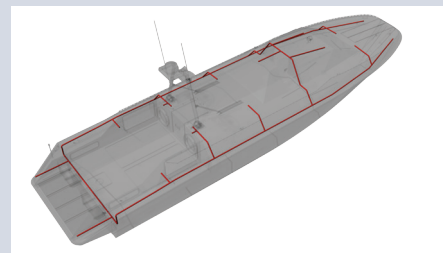
FEATURES



1 Optional weaponry



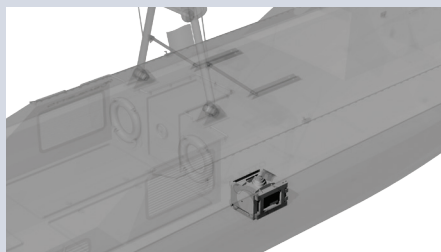
2 Ballistic protection



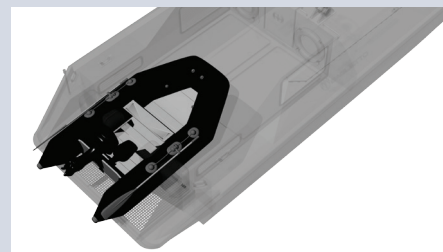
3 NBC protection
(nuclear, biological, chemical)



4 Hydrants



5 Gyroscope stabilizer



6 4.5 m tender



MNI 15



The MNI 15 is a 15 meters aluminum fast craft, designed for high efficiency in different operational scenario. It is a multi-purpose nautical platform, widely customizable both as regards the motor drive/propulsion, and the interior/exterior equipment.


BAGLIETTO
NAVY 1854



OUTLINE SPECIFICATION	
Hull type	Planning, Twin Waterjet Fast Patrol Boat
Material of hull	Aluminium
Builder	Baglietto S.p.A.
Hull and engineering	Baglietto S.p.A. / Fast Ship Design

MAIN DATA	
Length over all	15,83 m - 51 ft 11 in
Length at waterline	12,98 m - 43 ft
Beam	3,60 m - 11 ft 9 in
Draft	0,85 m - 3 ft
Depth	2,70 m - 8 ft 10 in
Full load displacement	20 t - 39,683 lb
Fuel capacity	2400 lt - 634 US gal
Fresh water capacity	450 lt - 119 US gal
Crew capacity	4 + 18
Main engine	2 x MAN R6-800
Maximum power	2 x 588 kW (800 hp) at 2.300 rpm
Maximum speed	45 kn
Cruising speed	35 kn
Range at maximum speed	330 nm
Propulsion	2 x Waterjet

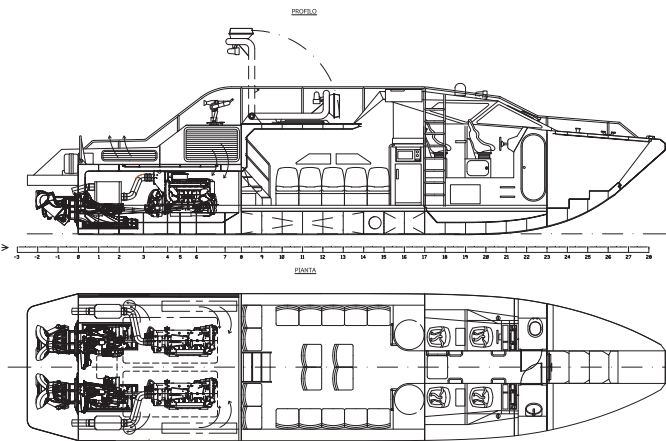
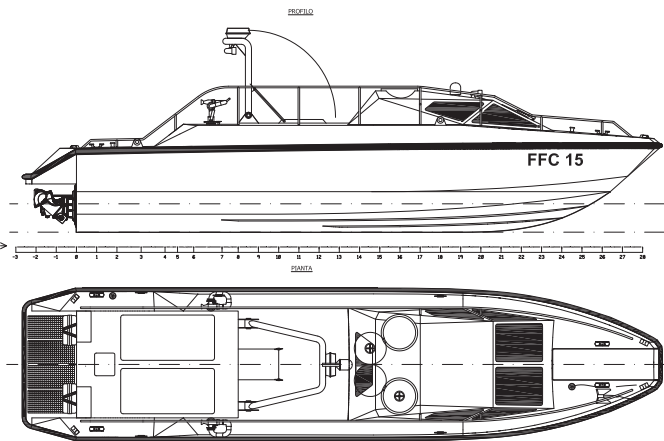
- The material used for the hull and the superstructure is an innovative 5083-H 128 aluminium alloy ideal for marine applications.
- The high metal sheet cutting and assembly techniques implemented contribute to achieving a flawless surface finish and do not require the use of paint for exterior finishing.
- The deep-V bottom has been designed to ensure great speed and outstanding manoeuvrability and seakeeping features.
- The stealth shapes of the superstructure result in maximum visibility and minimum impact.
- The interior layout can be optimised depending on the type of mission, allowing to remain at sea for at least one week.
- A watertight hull door is located forward, under the main deck, for personnel embarkation / disembarkation. The door can even be opened while at sea, during manoeuvring, and even when moving at low speed, to recover any floating items).
- Thanks to its limited size, this boat can be easily carried on board a parent ship and transported by road.

Radio and navigation equipment

- 10nm range radar
- GPS
- Magnetic compass
- Echo sounder
- Remote control searchlight
- Night Vision system
- VHF HF FM
- Intercom

Weaponry

- Remote controlled naval turret hitrole 12.7 mm type
- Marte MK2/2N anti-ship missile;



MNI15



MNI Ambulance
Is designed to give medical assistance up to two patients simultaneously. The stretcher can gain access both from the bow that from stern. Possibility patient pickup from the aft cockpit via helicopter.



Landing craft
Staged with 18 outdoor seats and a 4.5 meter attack tender. various weapons systems available.



MNI Fire Rescue
is equipped with 2 long range water cannons, ladders and boarding liferafts and bottazzo increased.



Coast Guard
optimized version for Coast Guard. is equipped with a dedicated office for document control.



FFC 15
FFC 15, is a troopship that can host up to 4 crew members plus 24 landing troops members. Entrance/ Exit through a bow ramp or a rear access.
A reinforced prow for beaching. Shooters turrets on the deckhouse.



MNI Missiles
is equipped for the launch of two water-air missile with a range up to 30km.



MNI Patrol
is equipped with 2 jet ski ramp for a quick release and hauling through rollers and winches.



MNI Drone
is an unmanned craft. The navigation of MNI Drone may operate with various degrees of autonomy: either under remote control by a human operator, or fully or intermittently autonomously, by onboard computers.



Logistic
equipped for the transport of a container